

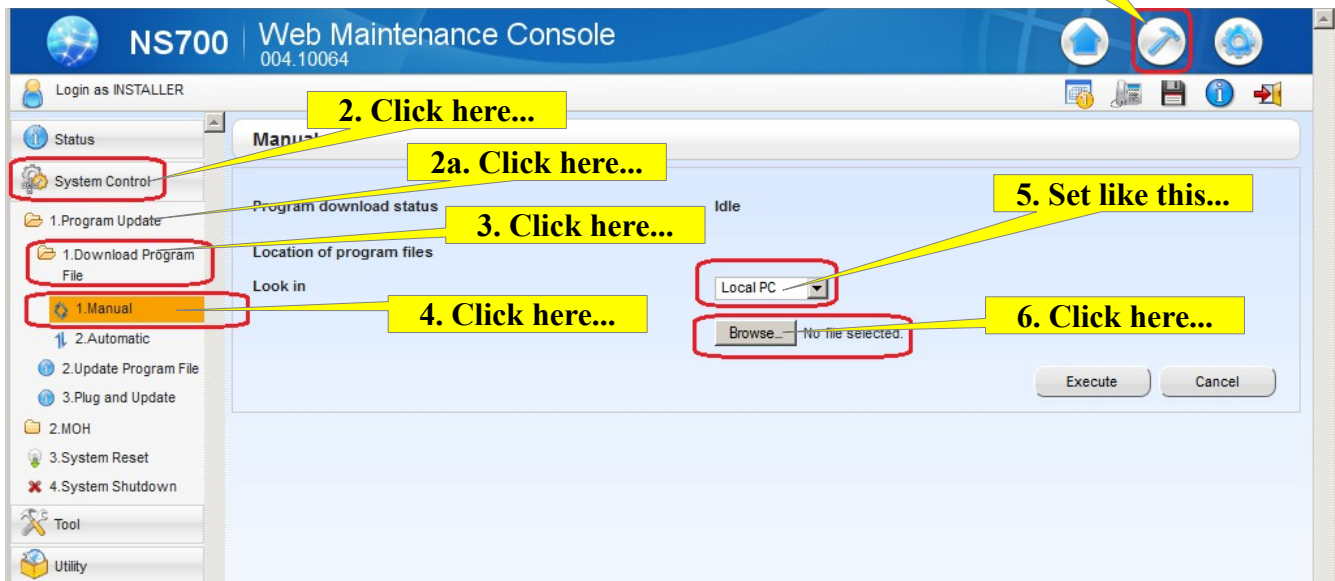
Panasonic KX-NS700

How to Download and Update Firmware

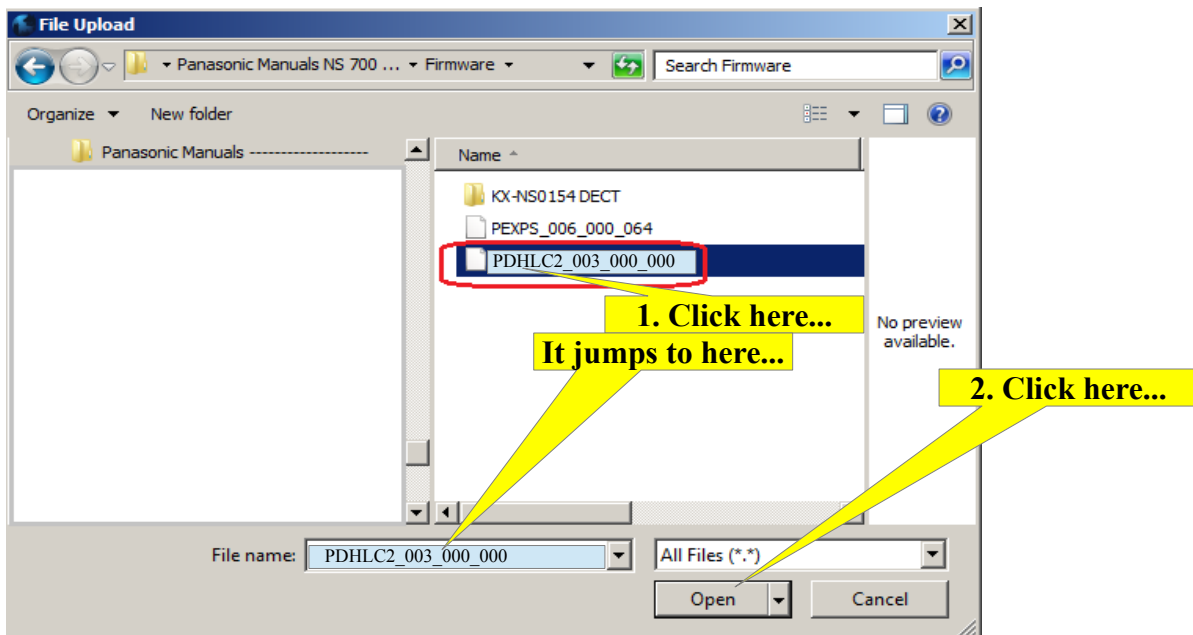
Telquest Tech Support

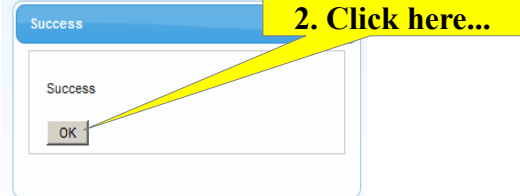
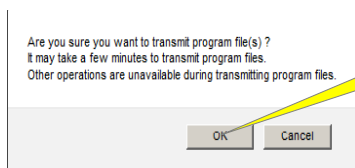
You should Backup System Data to a USB Drive before Updating the KSU.
It is explained in a separate Help Sheet.

This example updates the DHLC4 Card



After you click the Browse button, you will need to go where the Update File is located.
Here is an example of what mine looks like:





After you Download the new firmware, you must Update the KSU

1. Click here...

2. Click here...

3. Click here...

4. Click here...

5. Select this...

6. Check this...

7. Click here...

8. Click here...

Note: Additional Upgrades may appear here. Check each one that appears.

Program	Port Type	File name	File size	Timestamp	Version	Revision
NS700	NS700	PFMPR	79841678	May-26-2015 16:44:37	004.100	640

Shelf	Slot	Port	Component	Telephone
<input checked="" type="checkbox"/>	MainUnit	-	NS700	

Check to see if the Update was completed

