

Panasonic NS-700 KSU Install DSS Console – Digital Type Telquest Tech Support

You must first set one of the Digital Station Ports for DSS:

1. Click here...

The screenshot displays the 'NS700 Web Maintenance Console' interface. The top navigation bar includes 'Users', 'PBX Configuration', and 'Slot'. The left sidebar lists configuration categories from '1. Configuration' to 'Network Service'. The main content area shows a 'Slot' configuration page with tabs for 'IP Phone Registration', 'VoIP Property', and 'UM Property'. A 'Trunk Slot Card' table lists LCOT6, PRI23, and DPH2. An 'Extension Slot Card' table lists MCSLC16, MCSLC8, DLC16, DLC8, and DHL. A central image of a Panasonic KX-NS700 console shows a 'Trunk/DPH2' card in Slot 4 and a 'DLC16' card in Slot 6. A context menu is open over Slot 6, with options for 'Card Property', 'Port Property', 'Status', and 'Delete'. A 'Virtual Slot' button is visible at the bottom. Five yellow callout boxes provide instructions: '1. Click here...' points to the top right icons; '2. Click here...' points to the 'Slot' tab; '3. Click here...' points to the '1. Slot' menu item; '4. Mouse over a Digital Station Card' points to the console image; '5. Click here...' points to the 'Port Property' option in the context menu.

The Digital Station Card I have selected is in Slot 6 and I will be using the Port 1.

Next screen:

The screenshot shows the NS700 Web Maintenance Console interface. The main window displays the 'Port Property - Extension Port' configuration page. A table lists various ports with columns for No., Shelf, Slot, Port, Port Type, Telephone Type, Connection, Extension Number, Extension Name, XDP Mode, Parallel Telephone Ringing, DPT Type, and DPT Loca. Callouts highlight specific actions: 'Slot 6' and 'Port 1' point to the Slot and Port columns for row 21; '1. Name it' points to the Extension Name column for row 21; '2. Set to DSS' points to the DPT Type column for row 21; '3. See Note...' points to the Connection column for row 21; '4. Click here...' points to the 'Apply' button at the bottom right. The table data is as follows:

No.	Shelf	Slot	Port	Port Type	Telephone Type	Connection	Extension Number	Extension Name	XDP Mode	Parallel Telephone Ringing	DPT Type	DPT Loca
15	1	5	XDP3	S-Hybrid(SLT)	SLT	OUS	115		ALL	ALL		
16	1	5	XDP4	S-Hybrid(SLT)	SLT	OUS	116					
17	1	5	DXDP1	S-Hybrid(S-DPT)	No Connection	Fault	117					
18	1	5	DXDP2	S-Hybrid(S-DPT)	No Connection	Fault	118					
19	1	5	DXDP3	S-Hybrid(S-DPT)	No Connection	Fault	119					
20	1	5	DXDP4	S-Hybrid(S-DPT)	No Connection	Fault	120					
21	1	6	1	DPT	No Connection	OUS	185	Main Console			DSS	1
22	1	6	2	DPT	No Connection	OUS	186				Normal	1
23	1	6	3	DPT	No Connection	OUS	187				Normal	1
24	1	6	4	DPT	No Connection	OUS	188				Normal	1
25	1	6	5	DPT	No Connection	OUS	189				Normal	1
26	1	6	6	DPT	No Connection	OUS	190				Normal	1
27	1	6	7	DPT	No Connection	OUS	191				Normal	1
28	1	6	8	DPT	No Connection	OUS	192				Normal	1
29	1	6	9	DPT	No Connection	OUS	193				Normal	1
30	1	6	10	DPT	No Connection	OUS	194				Normal	1

3. Note:

This Connection needs to be OUS (Out of Service) before you can change the DPT Type to DSS.

Once Type is set to DSS, click the Apply button, and then set it to INS (In Service) if possible.

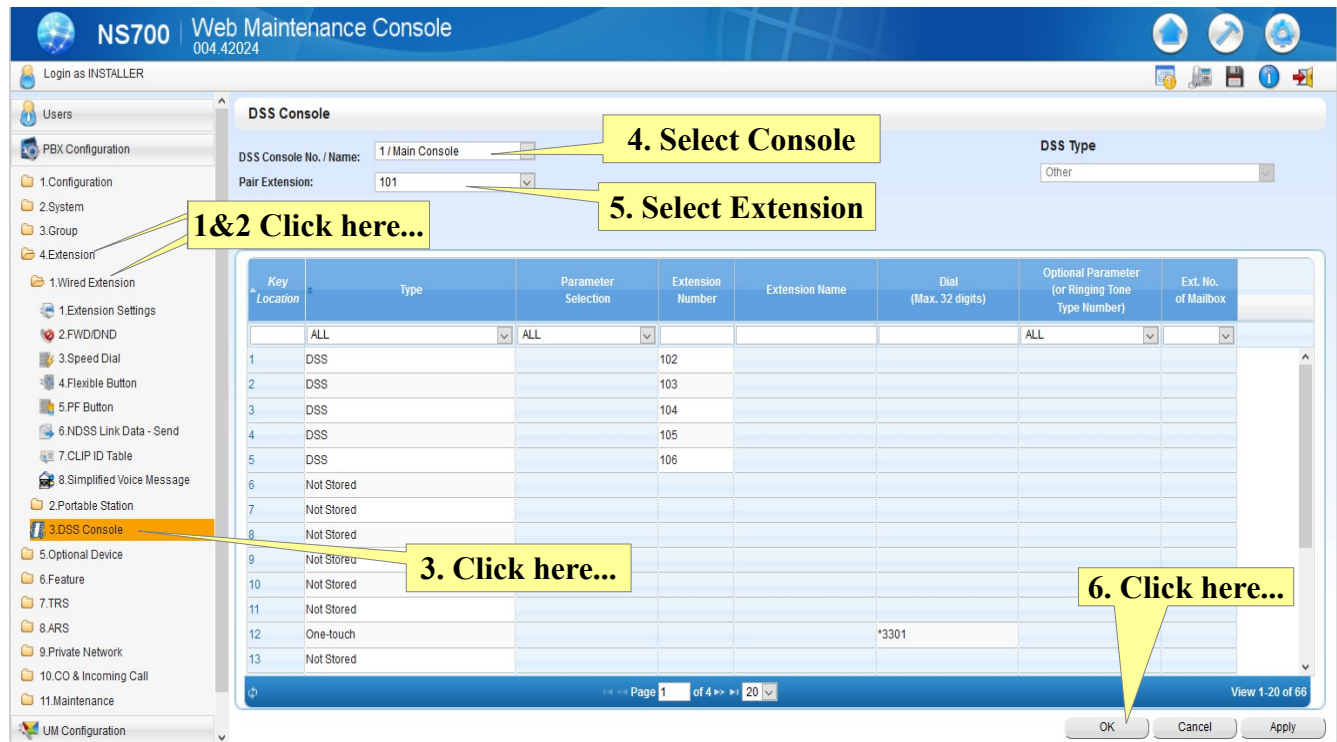
It may say Fault since the DSS Console may not be connected yet.

The DSS Console connects to the KSU the same as any Digital Station on its own separate pair.

Now we will “Pair” the DSS Console to an extension.

I will set Extension 101 in this example as the “Pair Extension”.

The “Paired Extension” is the extension that the DSS Console will work with.



Here you can see that DSS Console buttons 1 through 6 have been set to DSS for Extensions 102 through 106.

Button 12 has been set to One-Touch and programmed for All Page (Zone 1)

You can use the “Type” area to see additional types of buttons that are available.

Don't forget, the DSS Console needs its own separate pair from the KSU. It wires the same as a Digital Extension in the jack. (Second Pair) It DOES NOT plug into the Paired Extension.

